



# PermaTimber®

## QuickBoard™ Install Guide

---

QuickBoard™ Ceiling & Wall Lining is perfect for ceilings, interior wall cladding wall, patio / alfresco lining.

It is extremely quick and easy to install and low maintenance !

Note: QuickBoard™ is not suitable for use in direct sunlight.

[www.permatimber.com.au](http://www.permatimber.com.au)

# Installation Guidelines

*With correct installation, QuickBoard™ will provide years of enjoyment. Please ensure these instructions are read thoroughly prior to and during installation. Failure to adhere to the installation guidelines will void the warranty.*

Please be aware that the customer / installer is responsible for inspecting each board for colour, finish, size and other issues prior to installation.

If you have a large project please ensure all materials are ordered together, this guarantees that all the materials are from the same batch.

Perma Composites® warranty information can be found at [www.permatimber.com.au/warranty](http://www.permatimber.com.au/warranty)



# Assembly Requirements

When installing QuickBoard™ please ensure that each panel is fixed into the ceiling joists with screws. QuickBoard™ can span up to 600mm.

When fixing we suggest using the following...

	GYPROCK	STEEL	TIMBER
SCREWS	YES	YES	YES
ADHESIVE	NO	YES*	YES*

*\* Only with other fixing methods, not alone*

**Screws:** Needle point 8g x 13mm Screws, 6g Screws or equivalent.

**Adhesive:** Heavy Duty Construction Adhesive.

## Hardie Flex Roof:

When installing onto a Hardie Flex Roof the use of packers is recommended. Packers are to be used at each fixing point across the uneven area with the minimum size being 42 x 19mm (thickness to match difference in ceiling).

## Gyprock Roof:

When installing onto Gyprock, ensure you screw through the Gyprock into the battens at no more than 600mm centres.

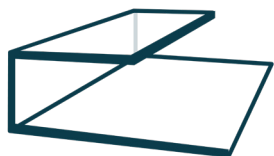
## Open Beam Roof:

If the ceiling members are greater than 600mm we recommend installing extra battens across the longer spanning sections. Batten size will vary based off each specific project.

# QuickBoard™ Trim System

# Choosing the Right Trim

The QuickBoard™ Trim System includes the following...



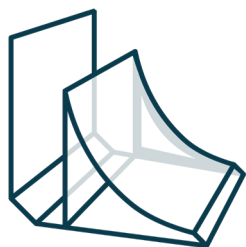
## U Edge Trim

Used for neatly finishing edges of the QuickBoard™.



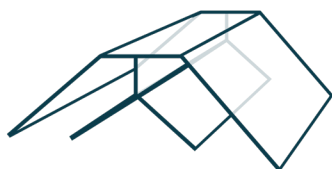
## H Joint Trim

Used where longer runs of QuickBoard™ are required for butt joining panels.



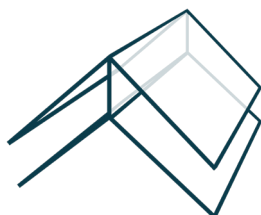
## Corner Cove Trim

The ideal way to neatly finish the edges of the panel.



## Internal Corner Trim

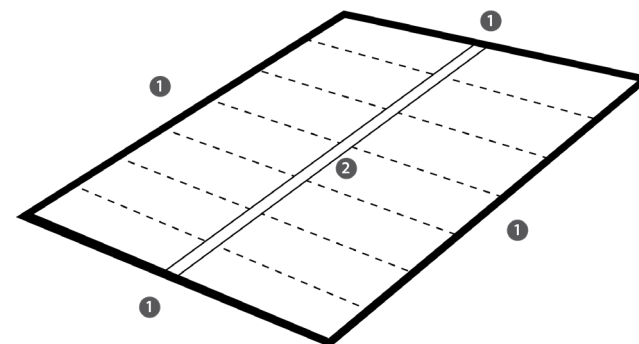
Can be used for internal corners.



## External Corner Trim

Can be used for external corners.

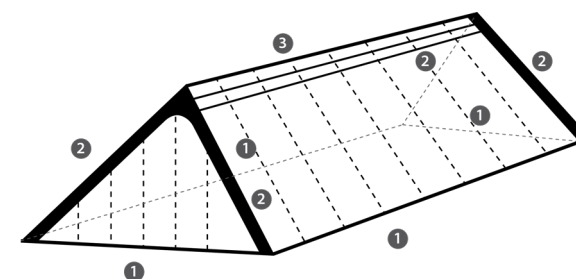
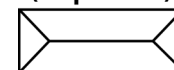
## FLAT



- ① - U Edge
- ② - H Joint (If run is over 2.4 metres)

## GAZEBO/HIP END

(Top View)



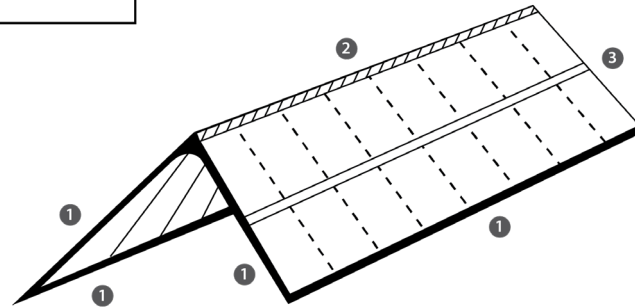
- ① - U Edge
- ② - H Joint
- ③ - Corner Cove

# Choosing the Right Trim

# Cutting

## GABLE /PITCHED

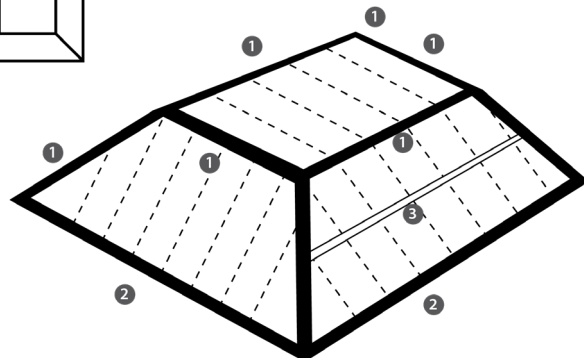
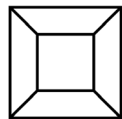
(Top View)



- ① - U Edge
- ② - Corner cove
- ③ - H Joint (if pitch is long enough this is required)

## GABLE /PITCHED W/FLAT ROOF

(Top View)



- ① - H Joint
- ② - U Edge (To be used on all exposed edges)
- ③ - H Joiner (if pitch is long enough this is required)

QuickBoard™ panels can be cut along their width and length using simple wood working tools (i.e. Jigsaw with a fine tooth blade). A sharp Stanley knife will also provide a clean cut when using a straight edge.

When cutting the QuickBoard™ cut to allow 1mm per 1m length for expansion and contraction of the board.

Please ensure the QuickBoard™ is not installed hard up against a rigid surface.

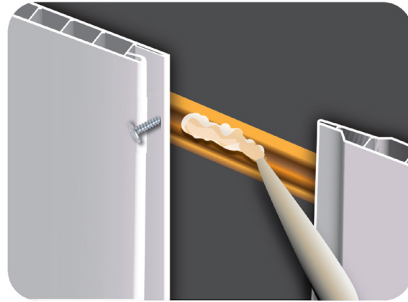
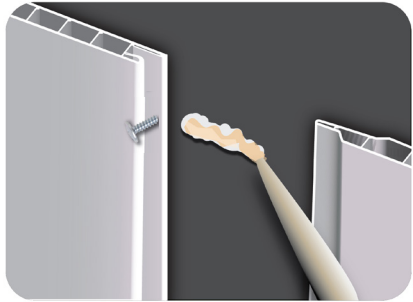
To cover the expansion gaps use QuickBoard™ Trim or suitable moulding or Quarter Round.

Cut outs for downlights and fans can be done with a high speed hole saw going through the product slowly. Please note downlight housing must not make contact with QuickBoard™, refer to page 11 for more information.

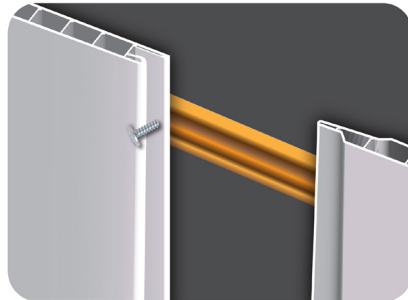


# Installing the QuickBoard™

## Adhesive



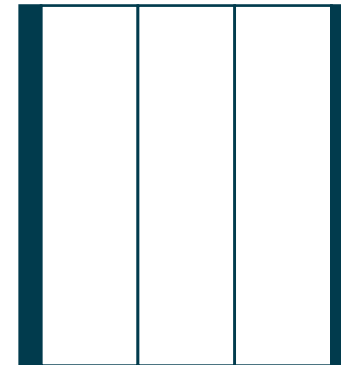
## Screws



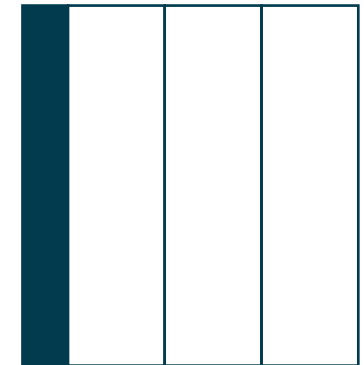
# Installing the QuickBoard™

Please ensure that all points around electrical sources are safe and isolated from power.

To allow for a symmetrical finish, split the difference of any cut boards across the starting and finishing boards.



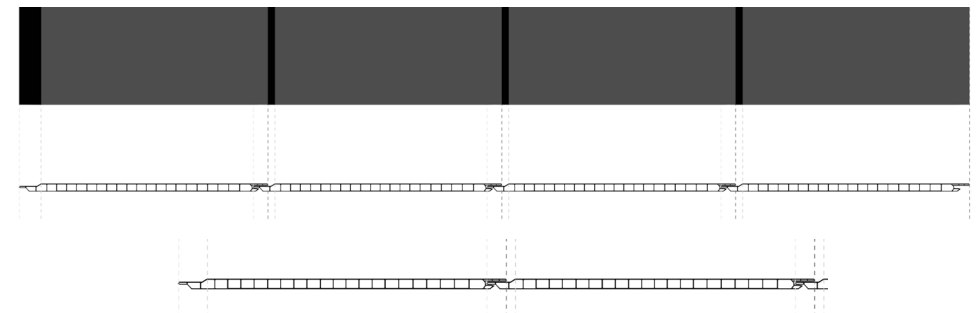
CORRECT METHOD



INCORRECT METHOD

To install QuickBoard™ complete the following steps...

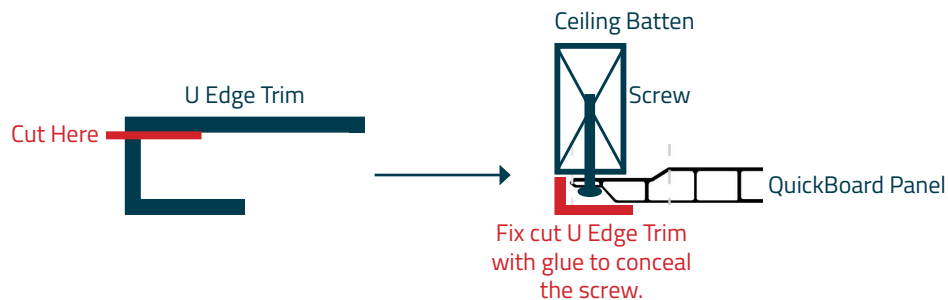
1. Install the U Edge Trim on the starting edge and one adjoining edge using your selected fixing method.
2. Fix your first board as shown in the diagram below. Slot the tongue edge into the U Edge Trim so it sits flush against the grooved edge (leave 600mm from the edge so the last U Edge Trim can be easily installed).



# Installing the QuickBoard™

3. Fix the QuickBoard™ into place ensuring panels are screwed into the ceiling joists every 600mm.
4. Continue fixing the QuickBoard™ to the ceiling or wall until you have covered the entire surface. Make sure to push each QuickBoard™ in securely along its length.
5. When fitting the last QuickBoard™ ensure the U Edge Trim is placed along the length of the board first then install on the ceiling. The last board can be fixed with adhesive.

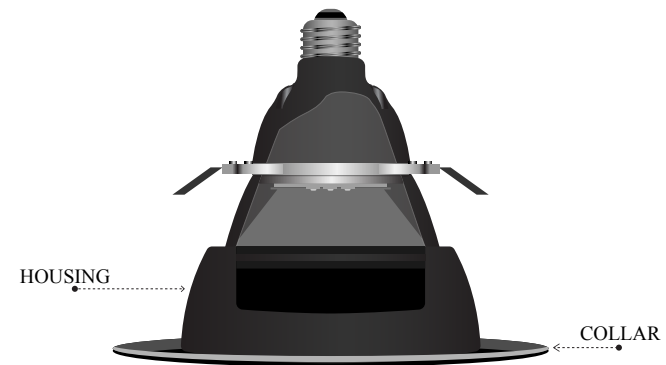
Alternatively, fix the last QuickBoard™ panel into place with screws. Then, cut the U Edge Trim down into an L shape, and glue it on to conceal the screws. Please see the diagram below;



# Fixing Around Down Lights

To install QuickBoard™ complete the following steps...

1. Ensure all points where you need to work around electrical sources are safe and isolated from power.
2. Ensure the QuickBoard™ is installed outside of the light housing. If it is installed over or in contact with the light housing, warranty will be void.
3. To cut holes for lights the use of a correct size hole saw is recommended.
4. QuickBoard™ can also be installed behind the light collar for a sleek finish. In doing so, cut the correct size hole with the hole saw and insert the light housing (so QuickBoard™ is still not in contact with the housing) and screw directly through QuickBoard™ and into ceiling.



## Butt Joins

When using the H Joint Trim for any butt joins, make sure there is enough room allowed from fixing at the end of the QuickBoard™ panel to slide in the trim. We do not recommend more than 1 Butt Join per run of QuickBoard™.

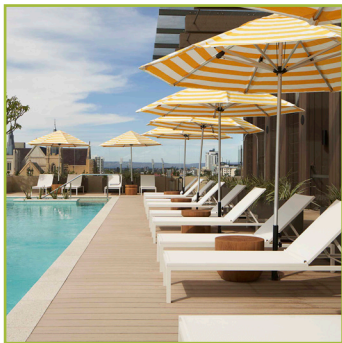
## Maintenance

QuickBoard™ does not require any ongoing maintenance. If needed, product can be cleaned with a damp cloth.

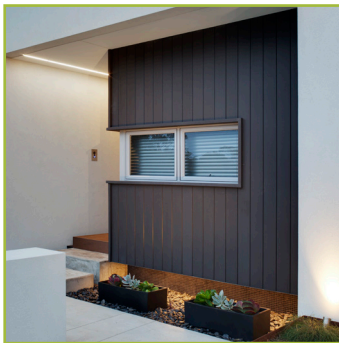


**Enjoy your QuickBoard™ Ceiling & Wall Lining!**

**The Full PermaTimber® Range:**



Decking



Cladding



Screening

[www.permatimber.com.au](http://www.permatimber.com.au)